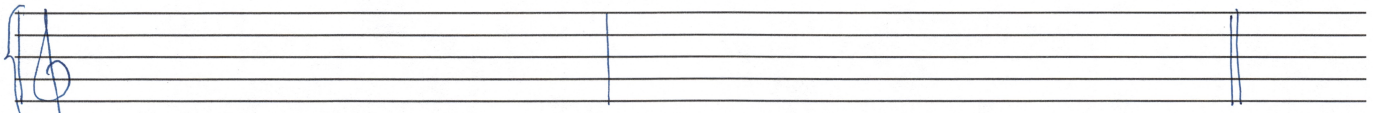
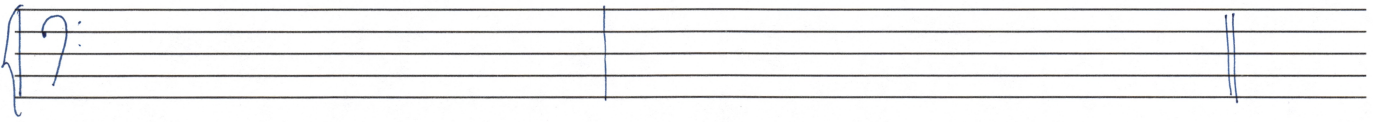


1. write the mode



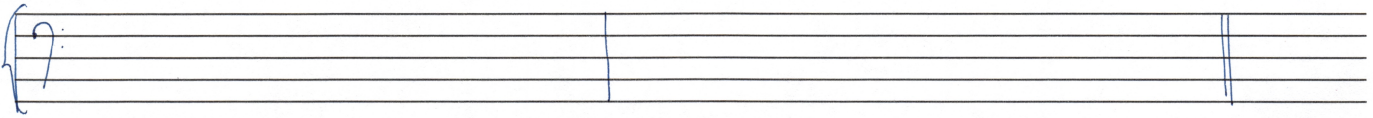
Dorian on C

Aeolian on G



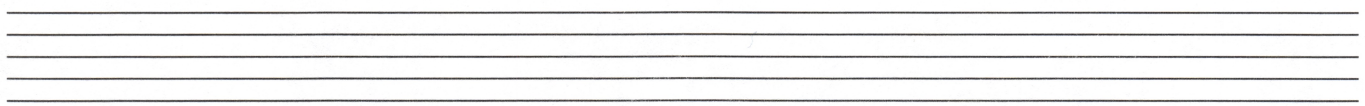
Mixolydian on F

Phrygian on C



Locrian on B

Lydian on A



2. identify the mode

on A

on C#

A musical staff in bass clef with two measures. The first measure contains notes A, B, C, D, E, F, G. The second measure contains notes A#, B#, C, D#, E, F, G#.

on G

on Gb

A musical staff in treble clef with two measures. The first measure contains notes G, A, B, C, D, E, F. The second measure contains notes Gb, Ab, Bb, Cb, Db, Eb, Fb.

on F

on D

A musical staff in treble clef with two measures. The first measure contains notes F, Gb, Ab, Bb, Cb, Db, Eb. The second measure contains notes F, G, A, B, C, D, E.